

ARCHITECTURAL DESIGN I PROJECT

Author: Lien Phuong Nghi
Instructor: Dr. Henriette Bier

Conceptual Design

Conceptual Design

MODERNISM

- In response to large-scale revolutions both in technology and culture in the early 20th century.
- Is associated with the functions of buildings, the reasonable usage of materials, the removal of ornament, the simple and clarified forms, and the openness to the structural innovation ("Modernism | Tag | ArchDaily," n.d.).

Conceptual Design

DESIGN IDEA

- Conceptualized by modernism, but not completely.
- The functions of the separator were still be prioritized
- Without the details used as decorations
- All elements have structural roles.

Conceptual Design

DESIGN IDEA

- Keep a shape that is not too complicated.
- Instead of straight, they are curved.
- Create a feeling of softness as well as movement.

Influences



Parametric Design



Sculptures of Artist Angela Glajcar

Conceptual Design

DESIGN IDEA

- Having several layers with the contour-line shape positioned at different heights.
- The whole structure looks like a flowing waterfall from above.

Design Development

Functions

Consists of two walls as two opposite waterfalls and a void in between.

Entrance wall:

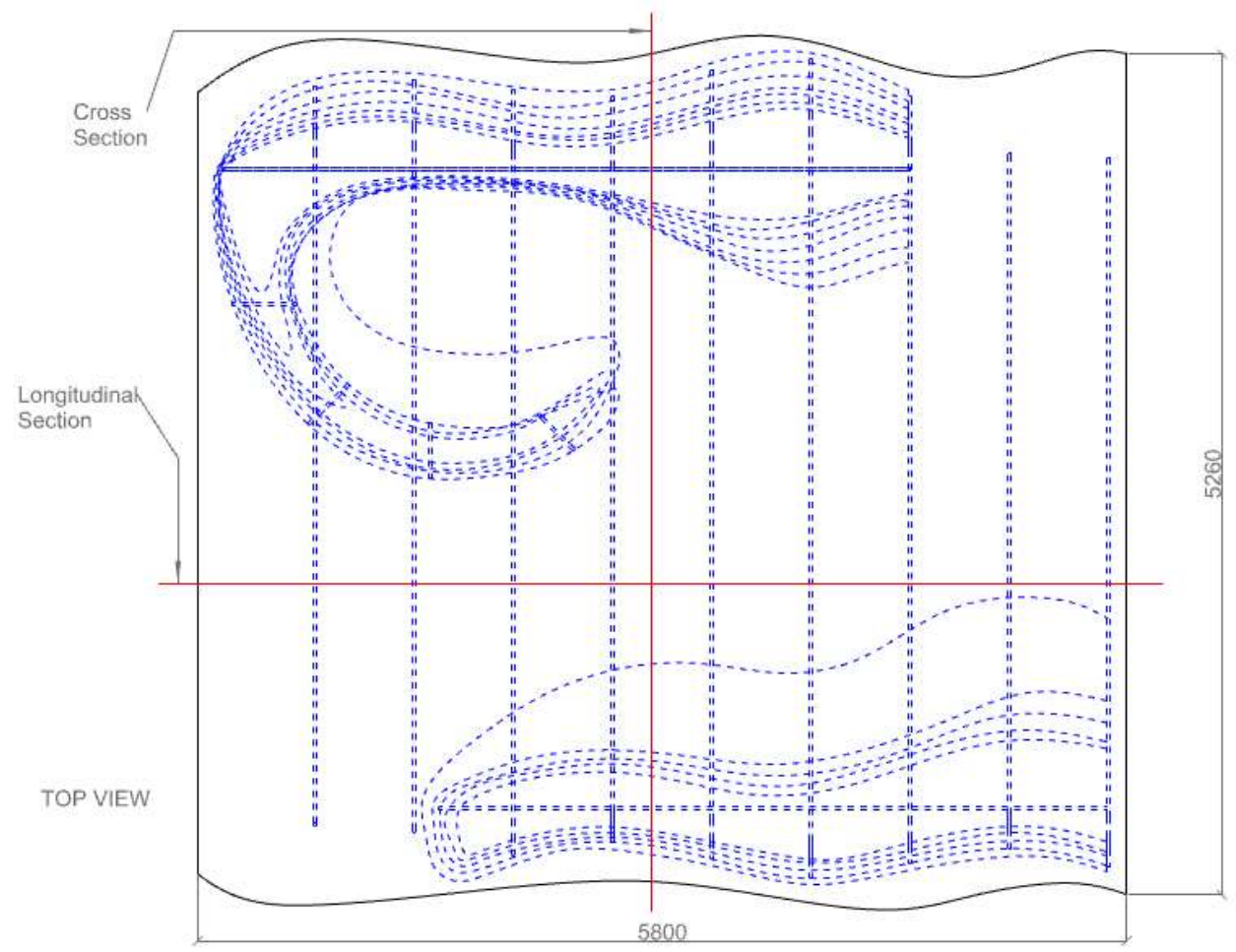
- exterior: small gallery
- Interior: waiting area

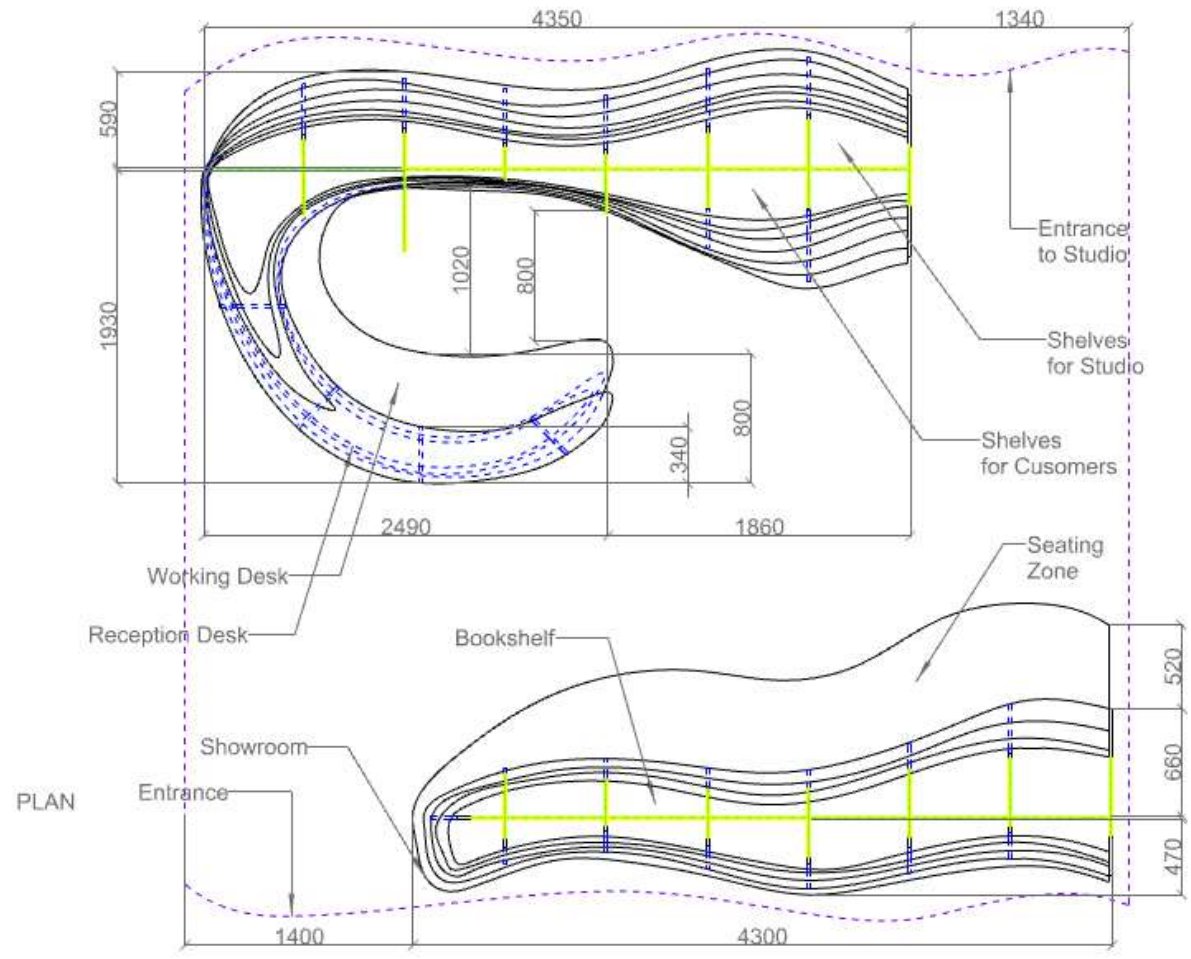
Opposite wall

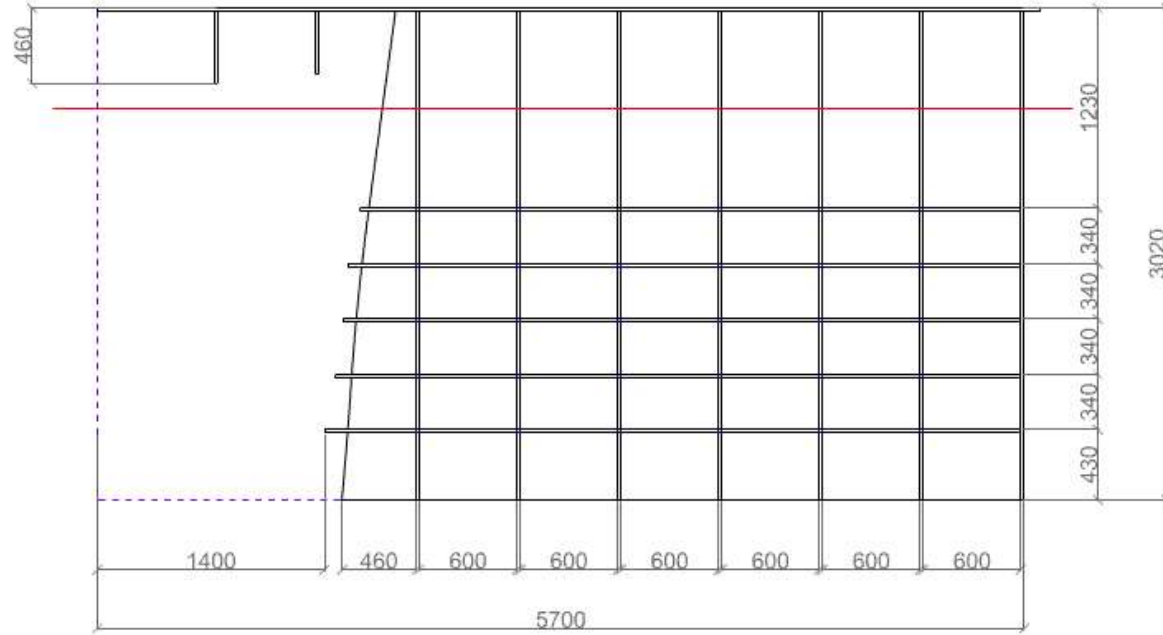
- Exterior: reception area and storage space for customers.
- Interior: shelves for the studio. With this arrangement,

Every space is utilized and this separator provides functions for both types of users: customers and employees.

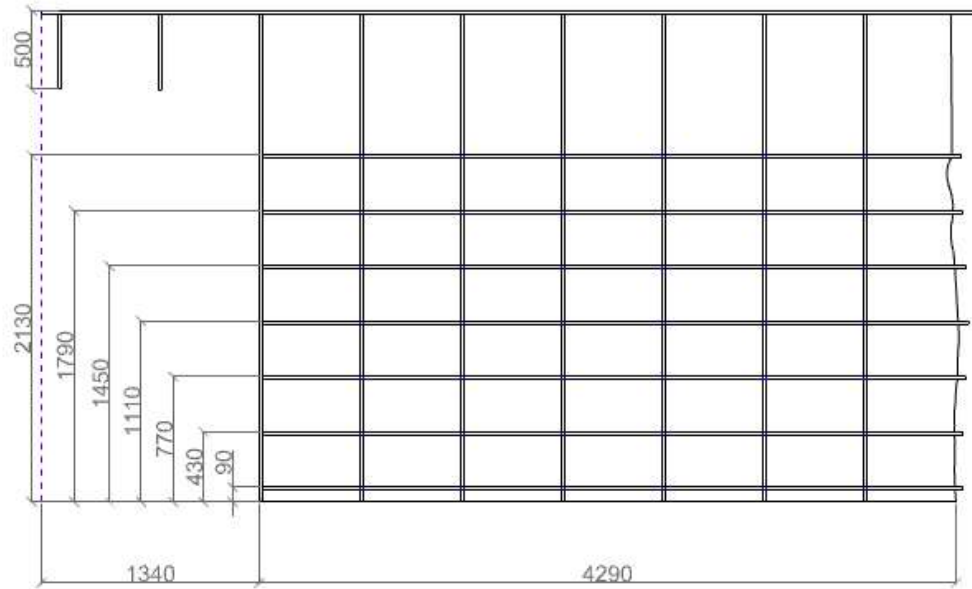
Drawings



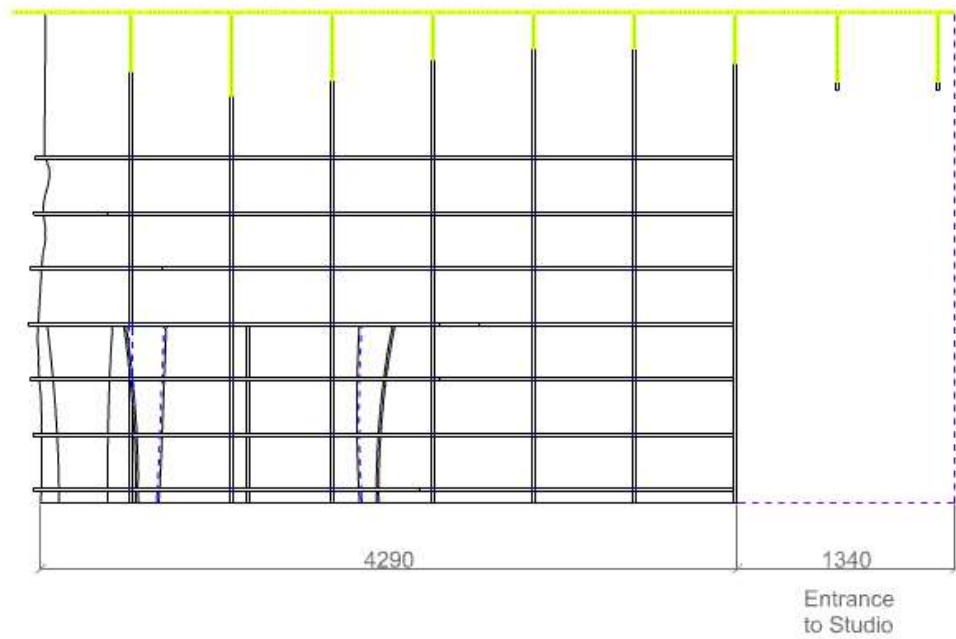




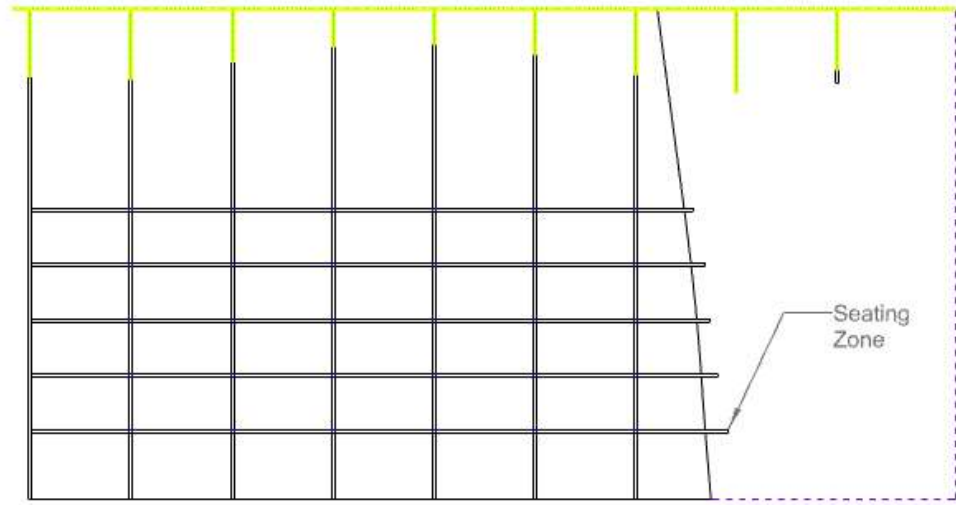
FRONT
(Showroom Only)



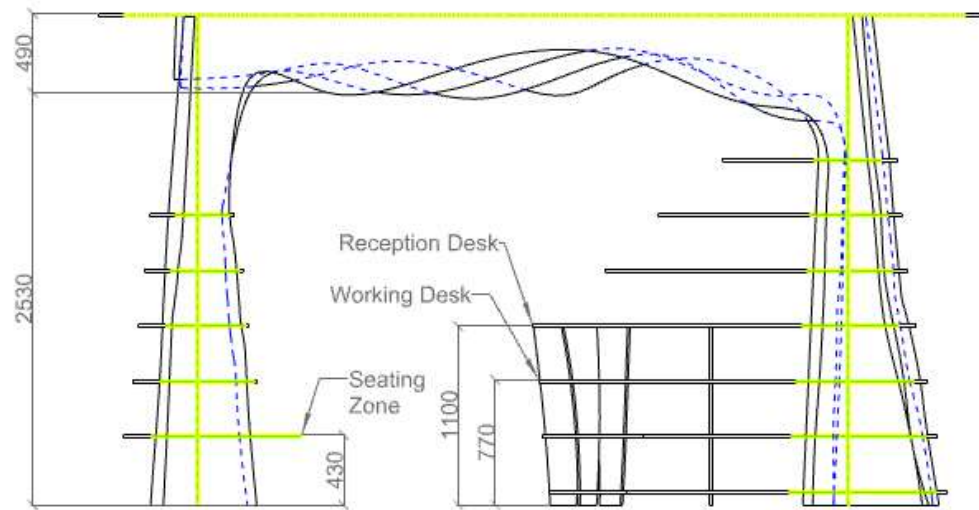
BACK
(Studio's Shelves Only)



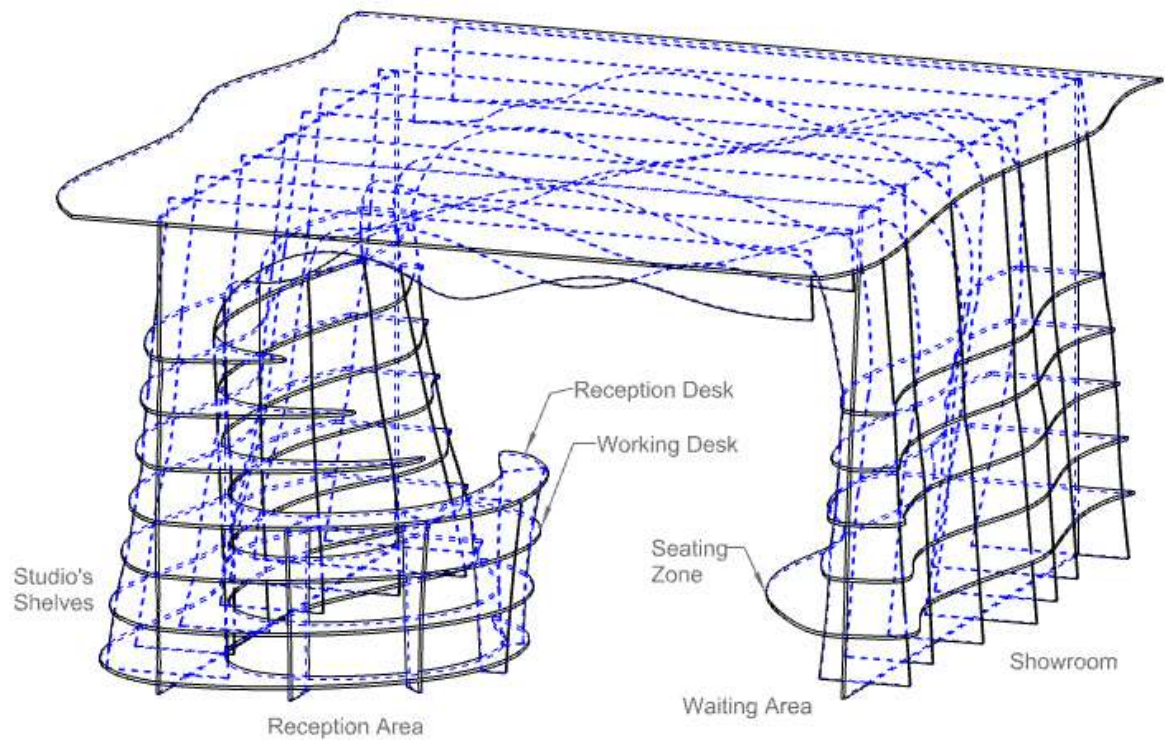
LONGITUDINAL SECTION
(Reception Area)



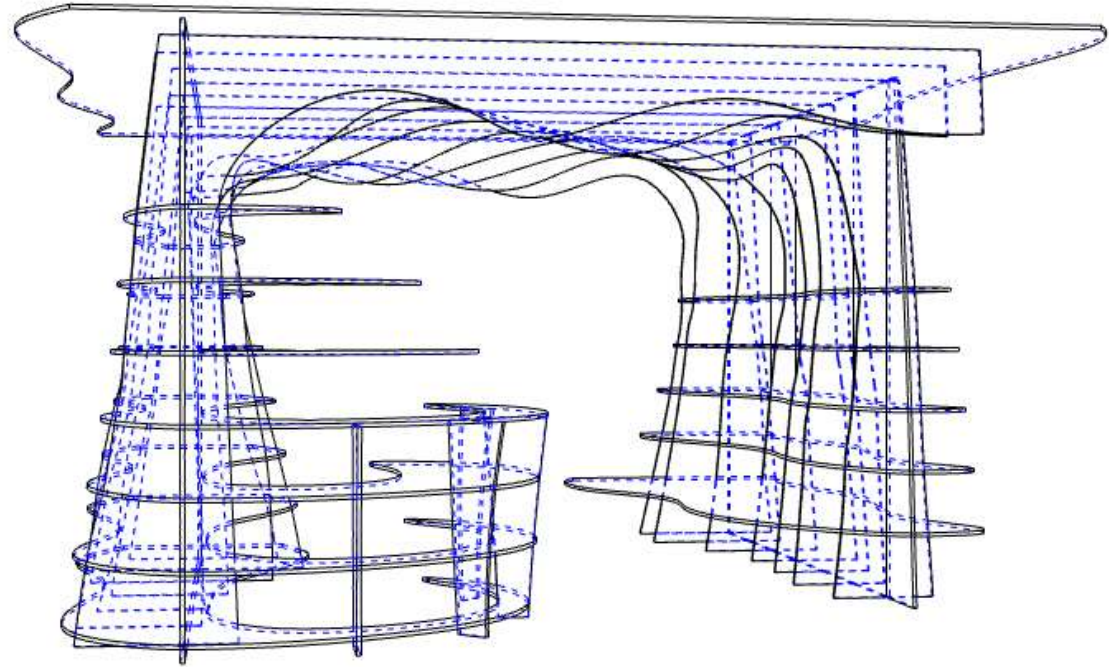
LONGITUDINAL SECTION
(Waiting Area)



CROSS SECTION



AXONOMETRY



TWO POINT PERSPECTIVE

Computer-Aided Design

Computer-Aided Design

Brings a great number of advantages

- Save time
- No need to draw with scale
- Easier to make physical model
- ...

Materialisation Design

MATERIAL: WOOD

- Renewable, reuseable, recyclable.
- Greenhouse positive product.
- Lower net environmental impact.

DESIGN

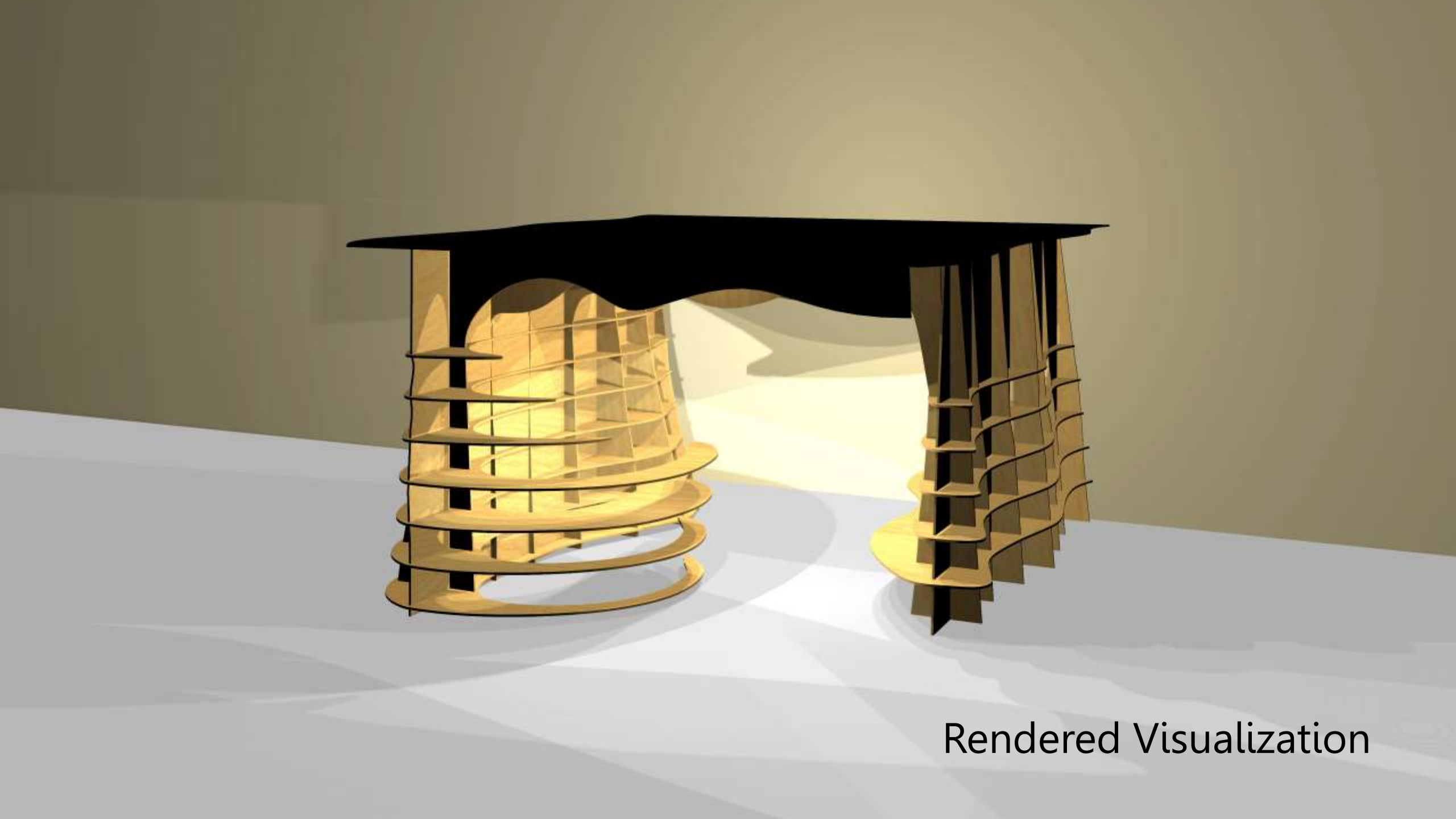
- Consist of 36 pieces of wood: frames, walls, shelves, roof.
- Homogeneous and eco-friendly.

Materialisation Design



Rendered Visualization



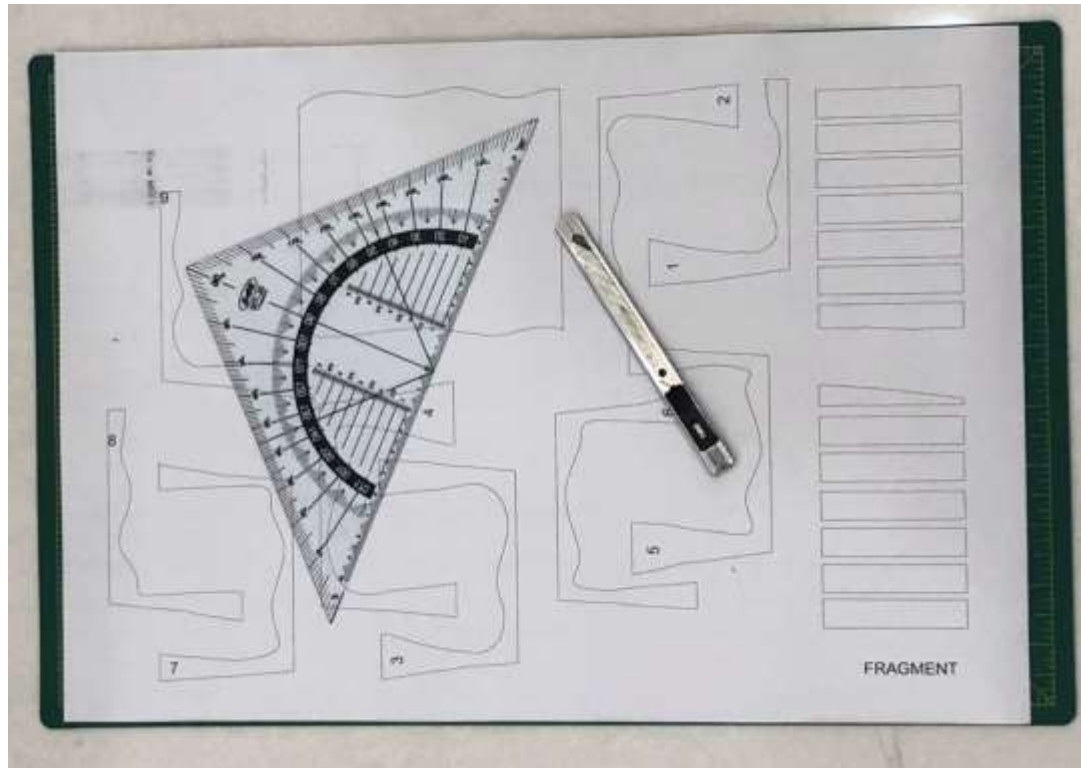


Rendered Visualization

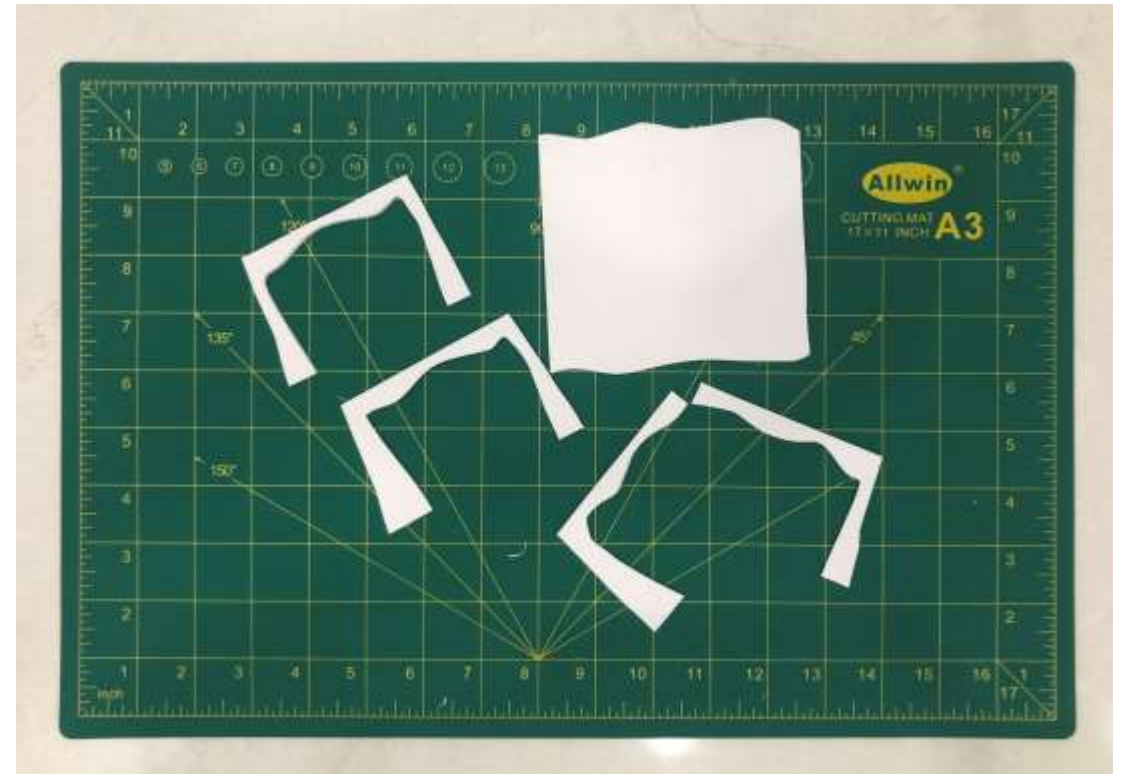
Physical Model

Scale 1:50

Physical Model



Printing Fragment Silhouette



Cutting Elements

Physical Model



Two Point Perspective



One Point Perspective

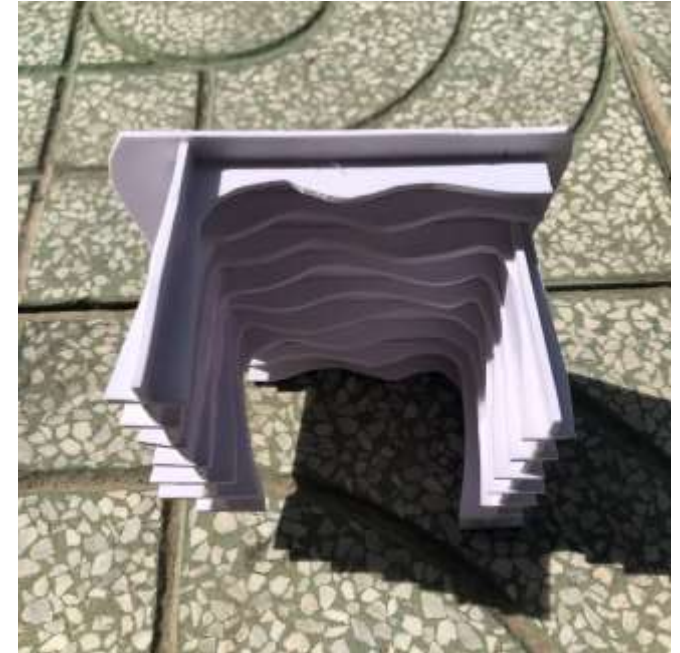
Physical Model



Front View



Back View



Detailed Ceiling

Thanks for watching!