

AD REPORT

Architectural Design/CAD 1



NOVEMBER 25, 2020
PHAN TRAN HAI BINH
Vietnamese-Geman University

1. Introduction

- The aim of this project is to understand the fundamental principles of modelling a 3D Architectural project which is acted as an entire process from a newbie start to get used to a 3D program until finalizing the complete separator. Its values are vital for student not only for this module but can also utilize these skills to apply for a further modules/projects. This report is going to focus on the design process in relation to what we learned throughout the weeks.

2. The Process and Methodology.

- *Pre-Design Process*: This is where the initial ideas come up pretty fast, but student have to classify and filter of which is suitable and possible for a limited period of time, square feet (area) and ability (skills). In my own case, the separator is going to be turned into small record studio with direct function: place to compose/create music. After the initial ideas were identified, we are moving into the next stage.

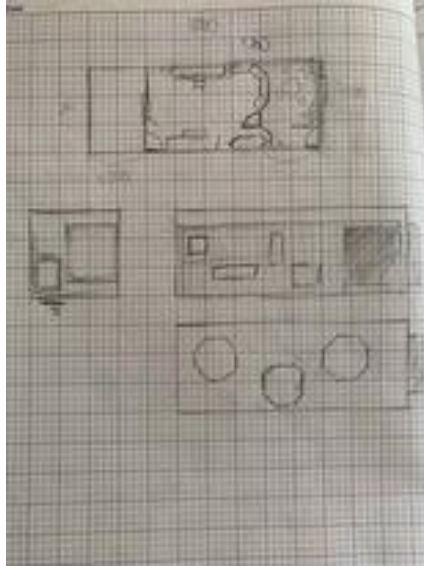


Figure 1. Draft Sketch

- **Schematic Design**: At this stage, student will then draw a draft architectural sketch, which is then presented to lecturers to review and give out some feedbacks. This sketch should outline the layout, feature, aesthetic and purpose of the design of the space. After receiving feedbacks from lecturers, we can now move on to the next stage, which is modelling.

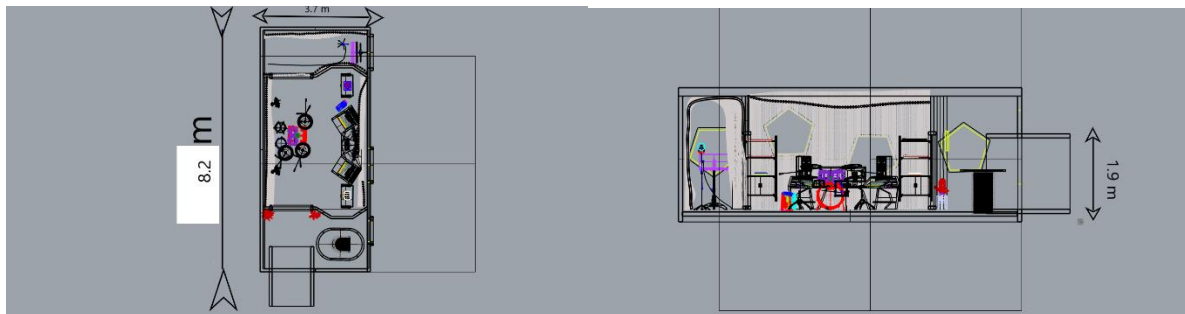


Figure 2. Floor Plan and Section View

- *Design Development*: After completing 2D sketches, it is time to turn it into 3D virtual model. As the student has given 2 weeks for getting used to work in Rhino (BIM program), they are now can be able to build up their own model themselves. In fact, the exterior walls are made first to give you an overall sight. Interior elements: walls, windows, curved wooden grids and furniture such as (audio racks, instrument...) have gradually been made and placed coordinately along the initial sketch.



Figure 3. Design Development

- *Materialization design*: After almost finalizing, this last-final stage is where elements have been identified in term of materials. In addition to my project, the exterior walls are identified as precast concrete slab which is well-graded at noise reduction, economical budget and perfectionism (flawless). For interior, walls are made of sand lime bricks which is super at noise cancelling, lightweight and thin

aesthetical pleasing, it is also inexpensive. Adding bit of ornamental exquisites, wooden grid frame has been demonstrated.

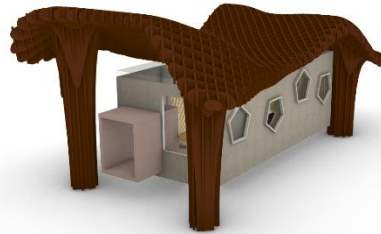


Figure 4. Rendered Project

3. Discussion

- After completely finalize the project, we are now evaluating the process in which has gone through. For rooms splitting scheme, the separator has been divided into 3 separate rooms: rest room/compose room, the audio room and the record room. In my opinion, the arrangement is clear straight-forward, however, the size of the restroom is matter as it seems to be a little narrow, thus it can only fit comfortably for one at a time. Moreover, the wooden grid that been added turn out to be functionless as it does not contribute to any roles. Last

but not least, the optional Waffle that create above the glazer roof, apart from preventing harsh UV light as the rooftop is create entirely by transparent glass, like wooden grid, it is also presenting more like an ornament rather than a architectural modernist elements.

- Except three issues that I mention above, the separator has developed smoothly to what has been planned for. It is fully satisfying the requirements.