

# ARCHITECTURAL DESIGN I PROJECT

Author: Lien Phuong Nghi  
Instructor: Dr. Henriette Bier

# Conceptual Design

# Conceptual Design

## MODERNISM

- In response to large-scale revolutions both in technology and culture in the early 20th century.
- Is associated with the functions of buildings, the reasonable usage of materials, the removal of ornament, the simple and clarified forms, and the openness to the structural innovation (“Modernism | Tag | ArchDaily,” n.d.).

# Conceptual Design

## DESIGN IDEA

- Conceptualized by modernism, but not completely.
- The functions of the separator were still be prioritized
- Without the details used as decorations
- All elements have structural roles.

# Conceptual Design

## DESIGN IDEA

- Keep a shape that is not too complicated.
- Instead of straight, they are curved.
- Create a feeling of softness as well as movement.

# Influences



Parametric Design



Sculptures of Artist Angela Glajcar

# Conceptual Design

## DESIGN IDEA

- Having several layers with the contour-line shape positioned at different heights.
- The whole structure looks like a flowing waterfall from above.

# Design Development



# Functions

Consists of two walls as two opposite waterfalls and a void in between.

Entrance wall:

- exterior: small gallery
- Interior: waiting area

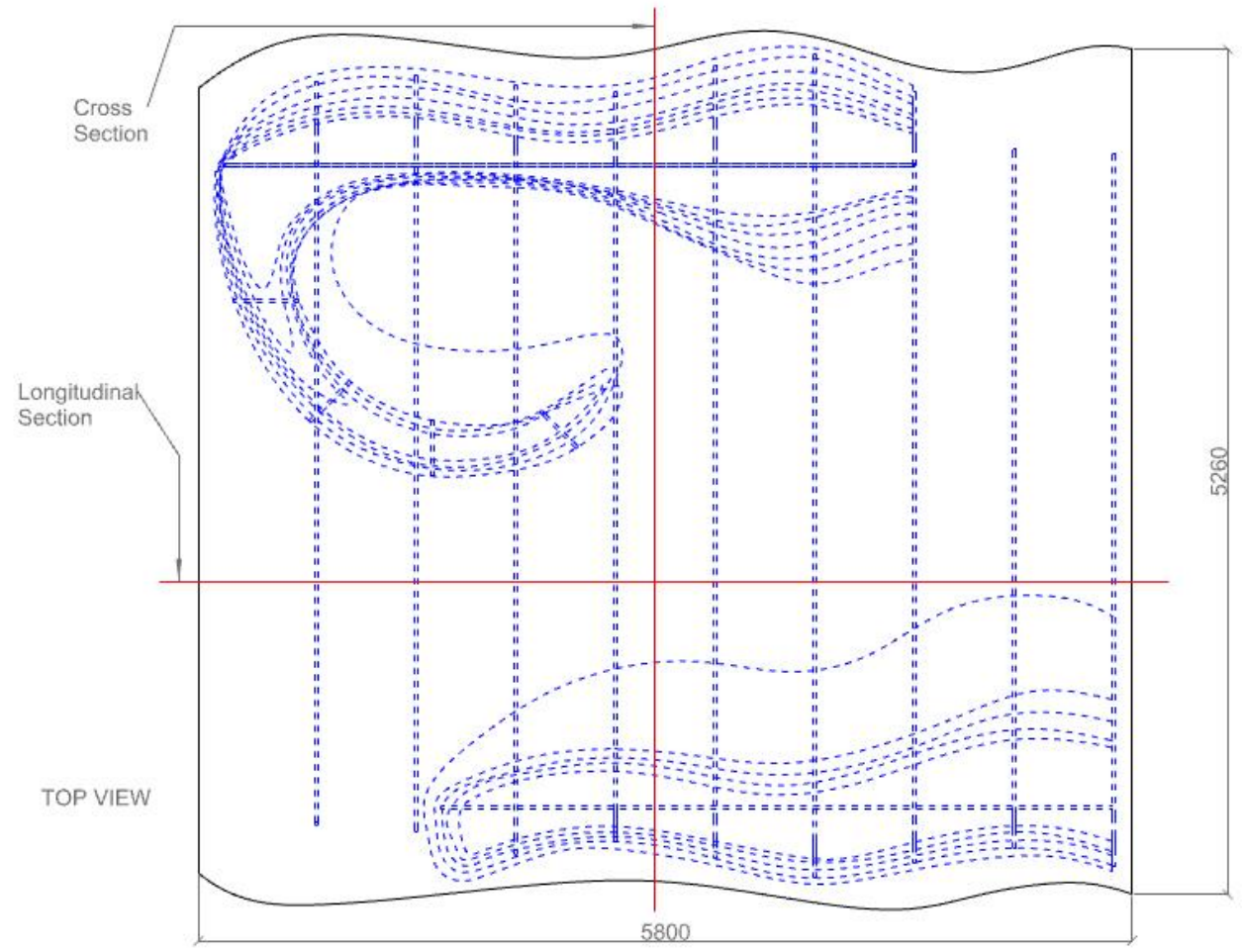
Opposite wall

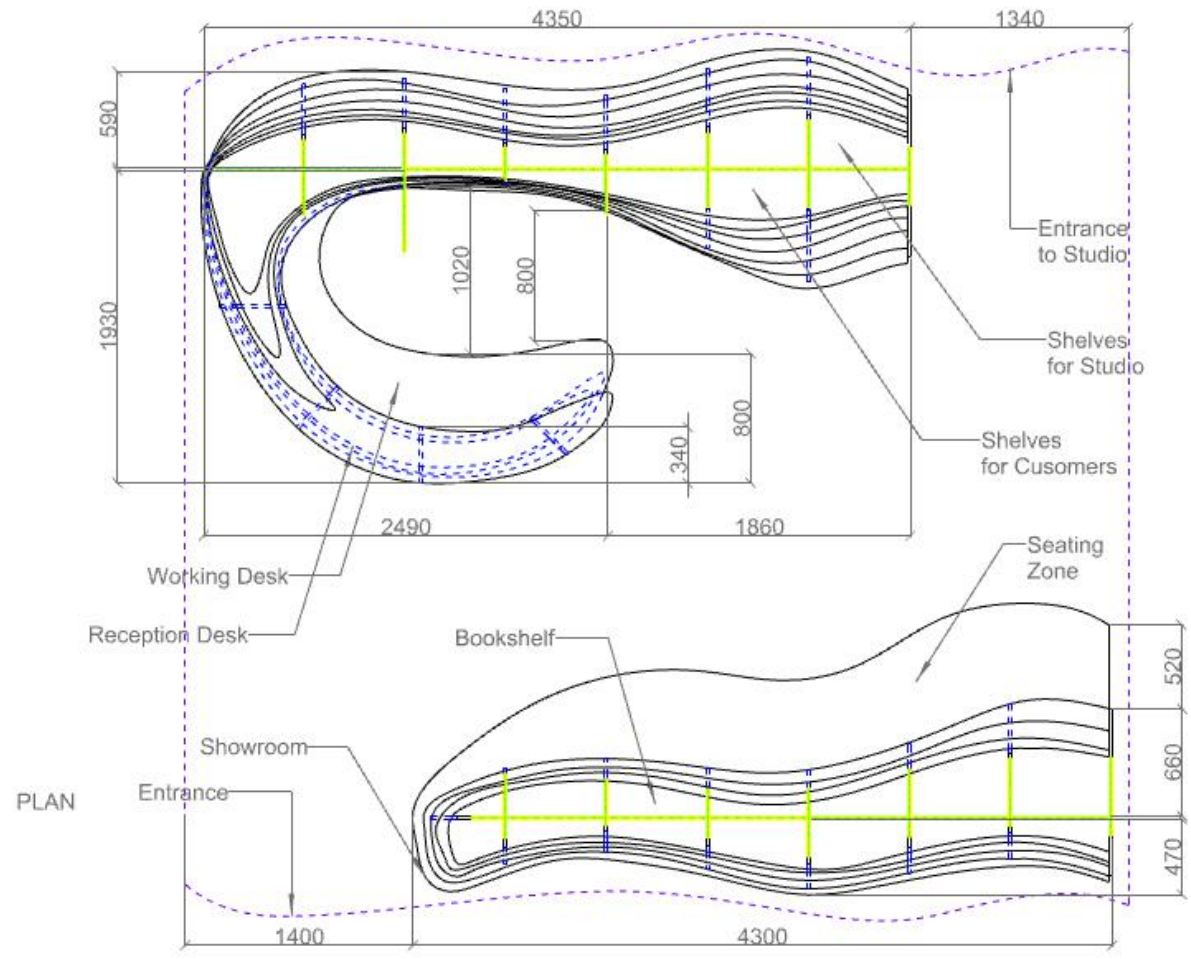
- Exterior: reception area and storage space for customers.
- Interior: shelves for the studio. With this arrangement,

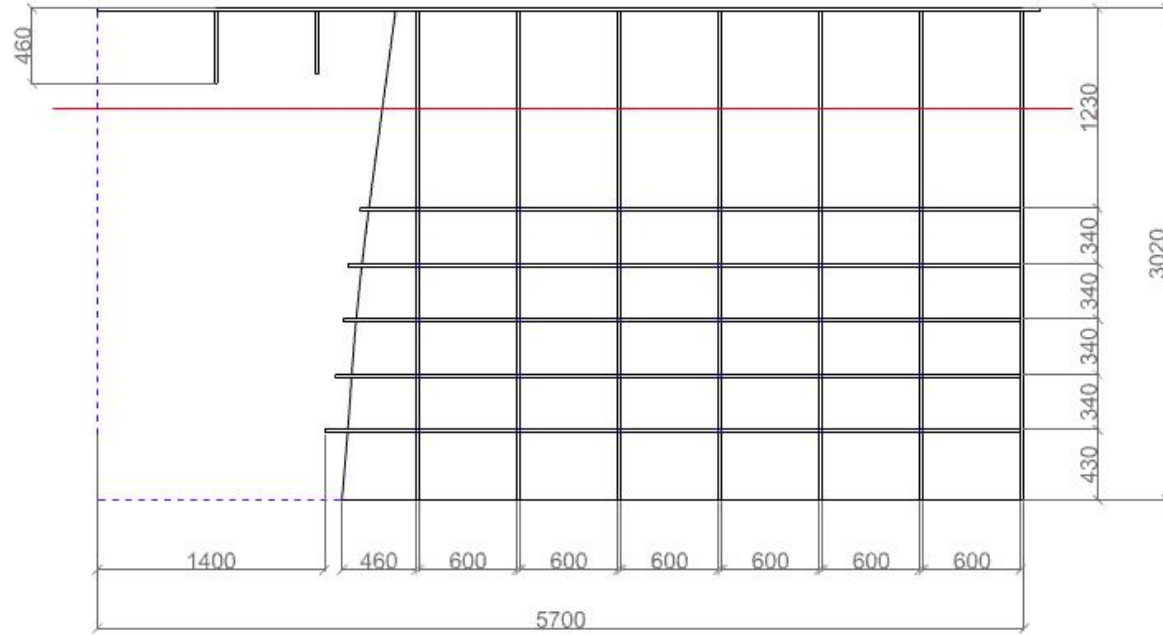
Every space is utilized and this separator provides functions for both types of users: customers and employees.

# Drawings

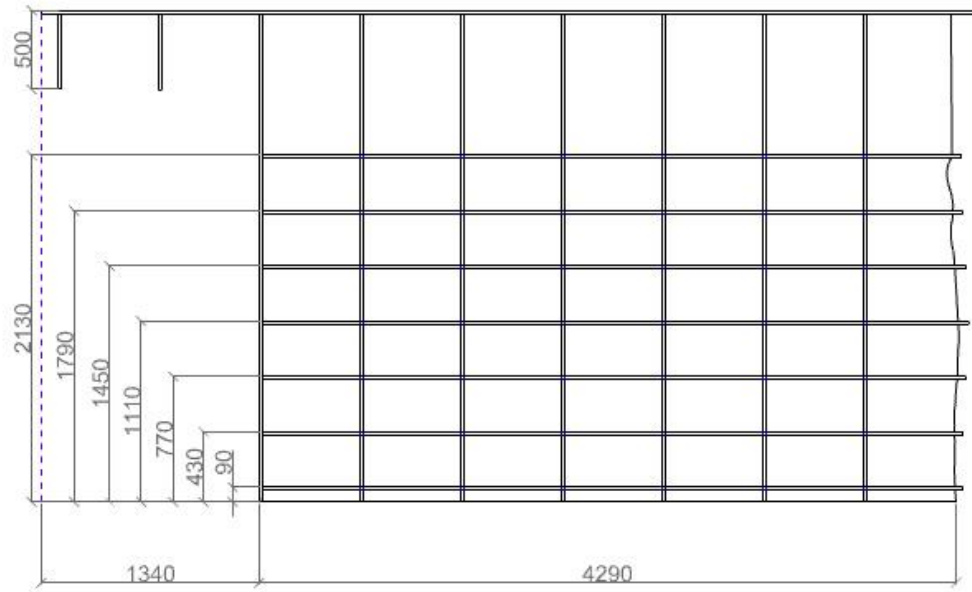
Scale 1:40



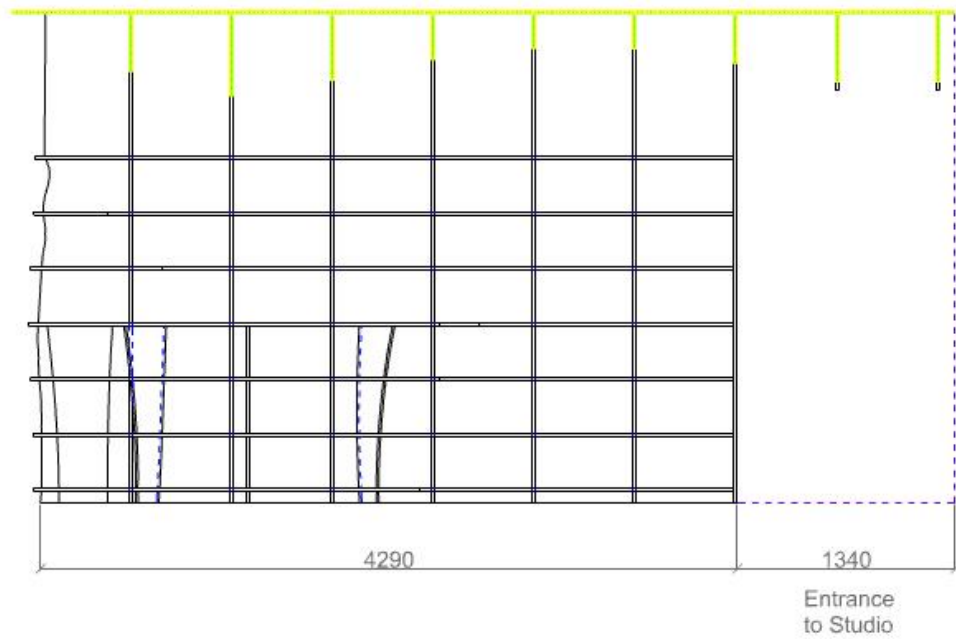




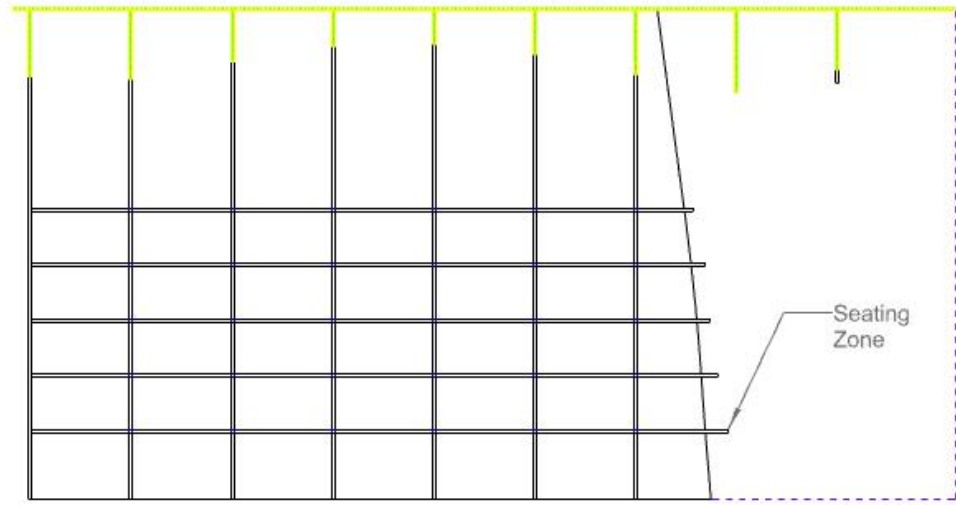
FRONT  
(Showroom Only)



BACK  
(Studio's Shelves Only)

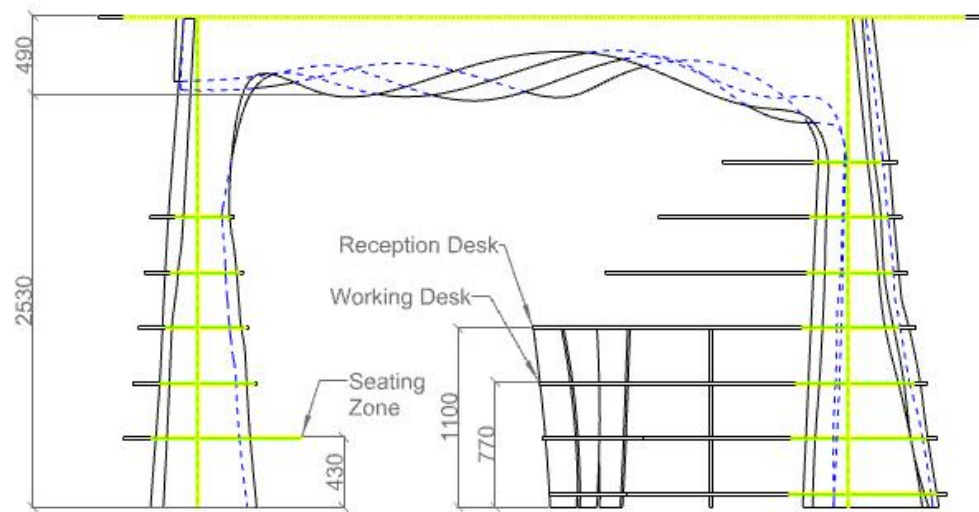


LONGITUDINAL SECTION  
(Reception Area)

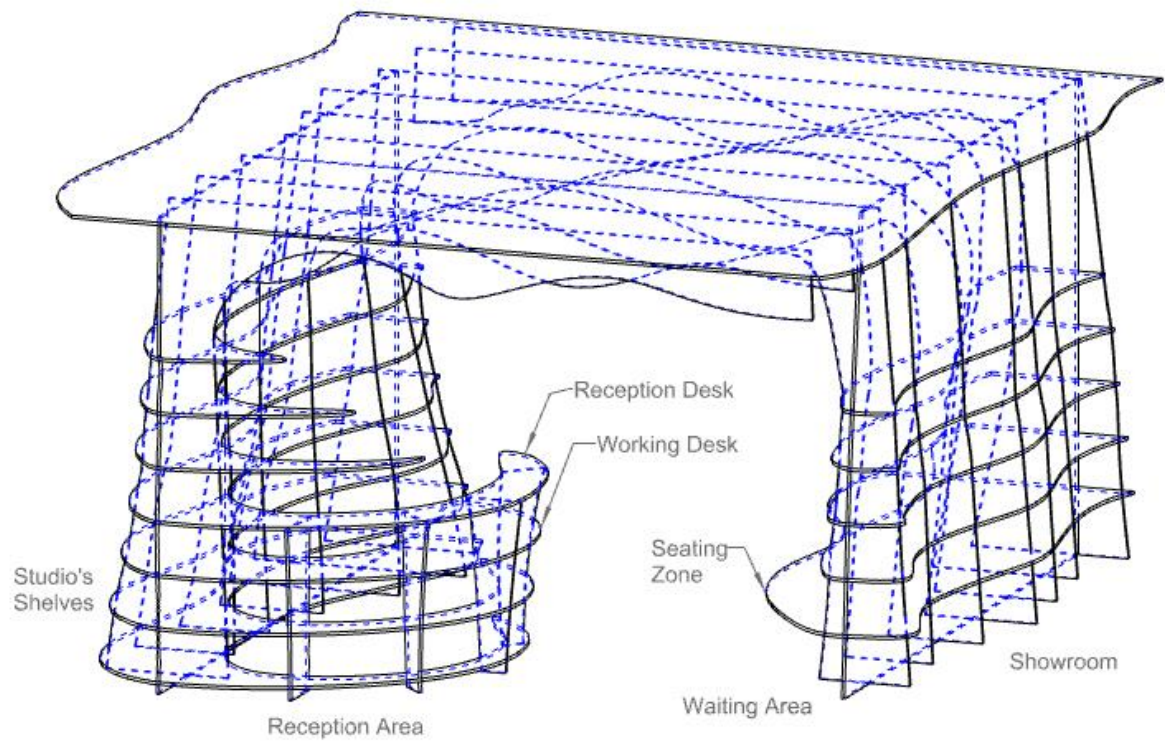


LONGITUDINAL SECTION  
(Waiting Area)

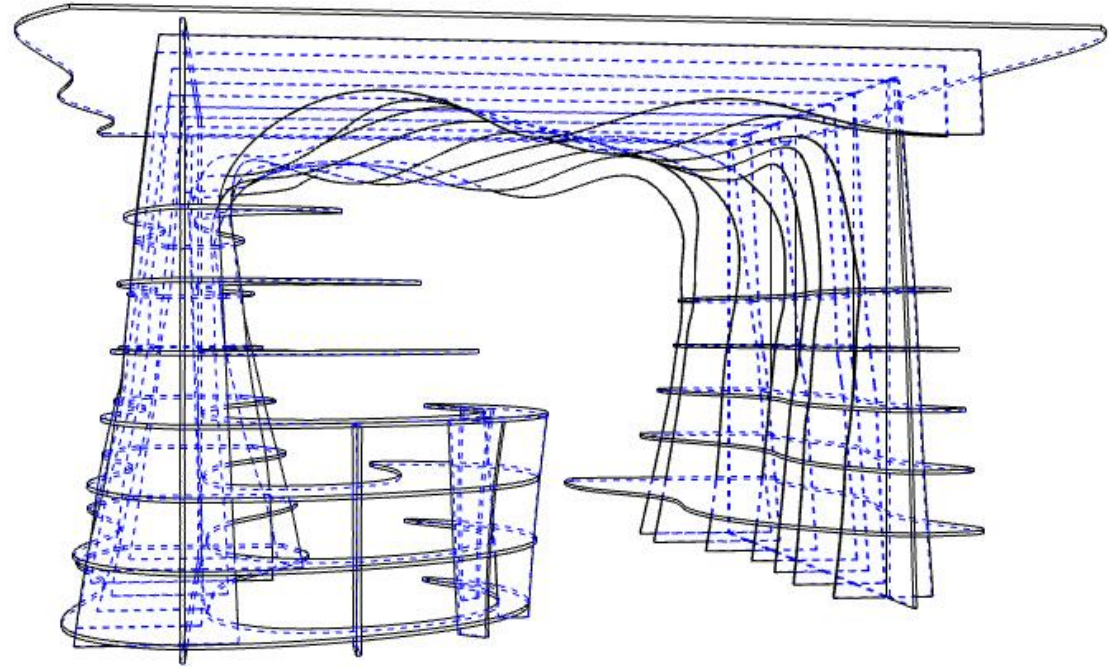




CROSS SECTION



AXONOMETRY



TWO POINT PERSPECTIVE

# Computer-Aided Design

# Computer-Aided Design

Brings a great number of advantages

- Save time
- No need to draw with scale
- Easier to make physical model
- ...

# Materialisation Design

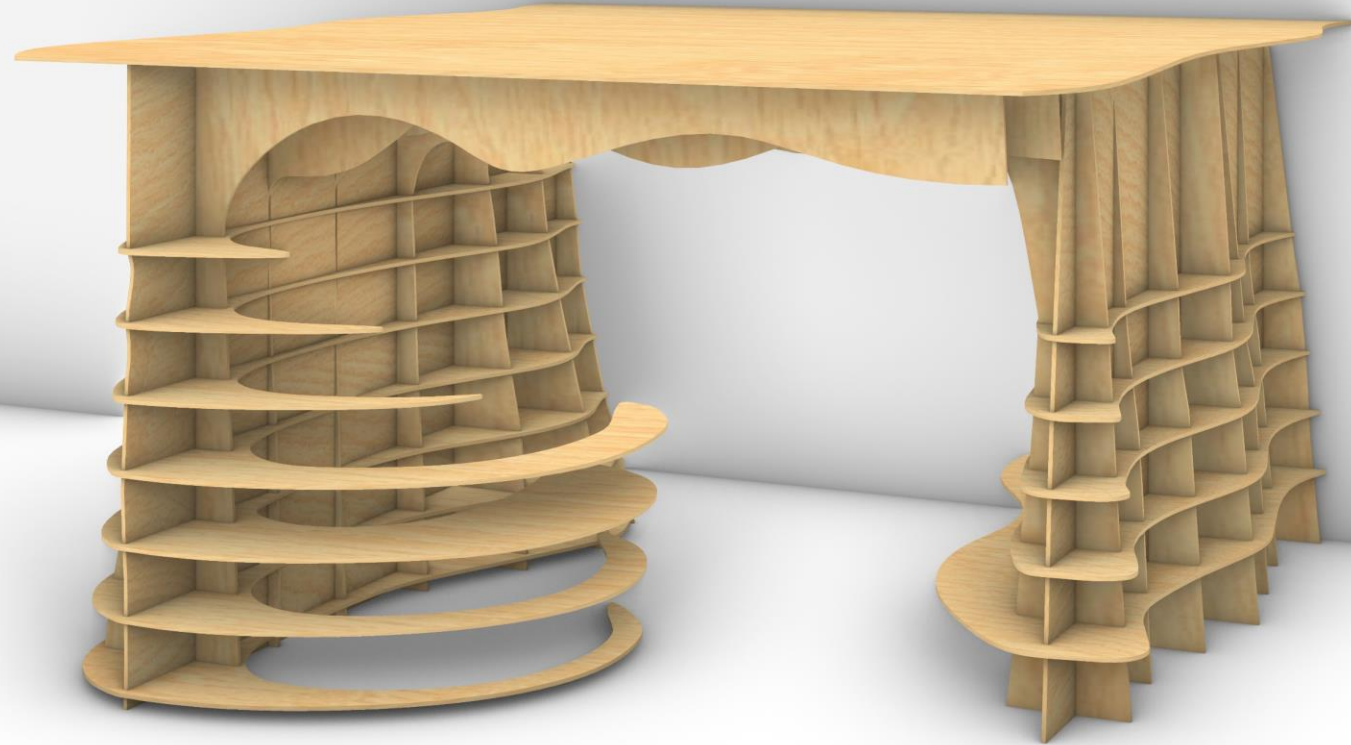
## MATERIAL: WOOD

- Renewable, reuseable, recyclable.
- Greenhouse positive product).
- Lower net environmental impact.

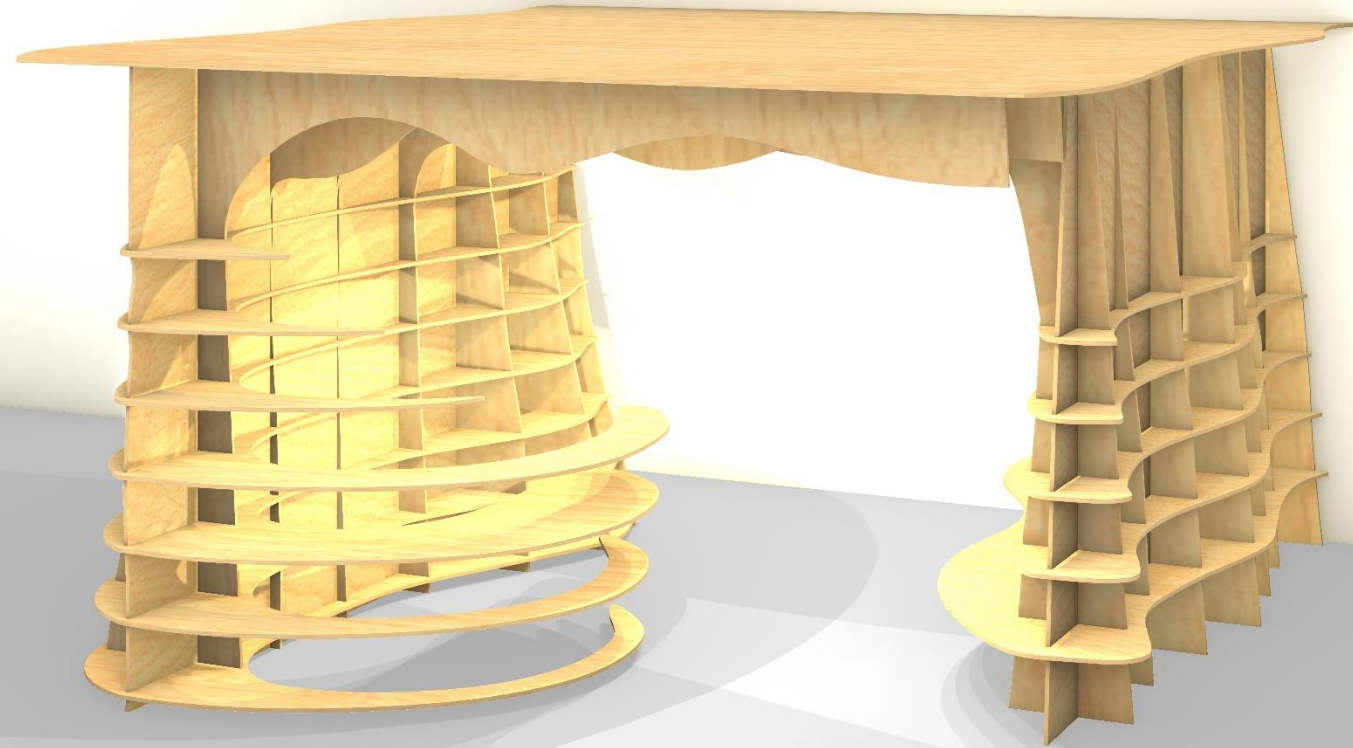
## DESIGN

- Consist of 36 pieces of wood: frames, walls, shelves, roof.
- Homogeneous and eco-friendly.

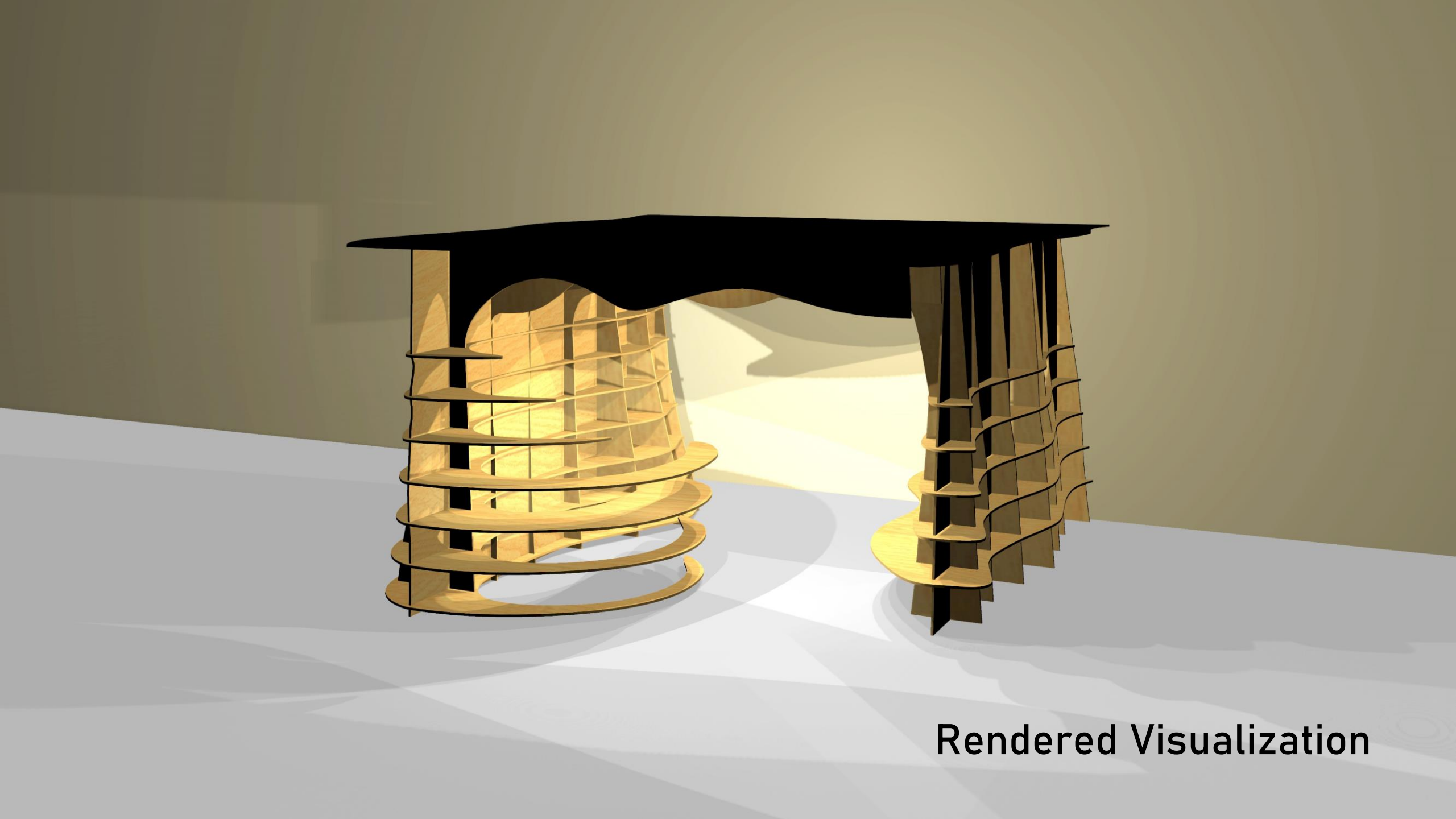
# Materialisation Design



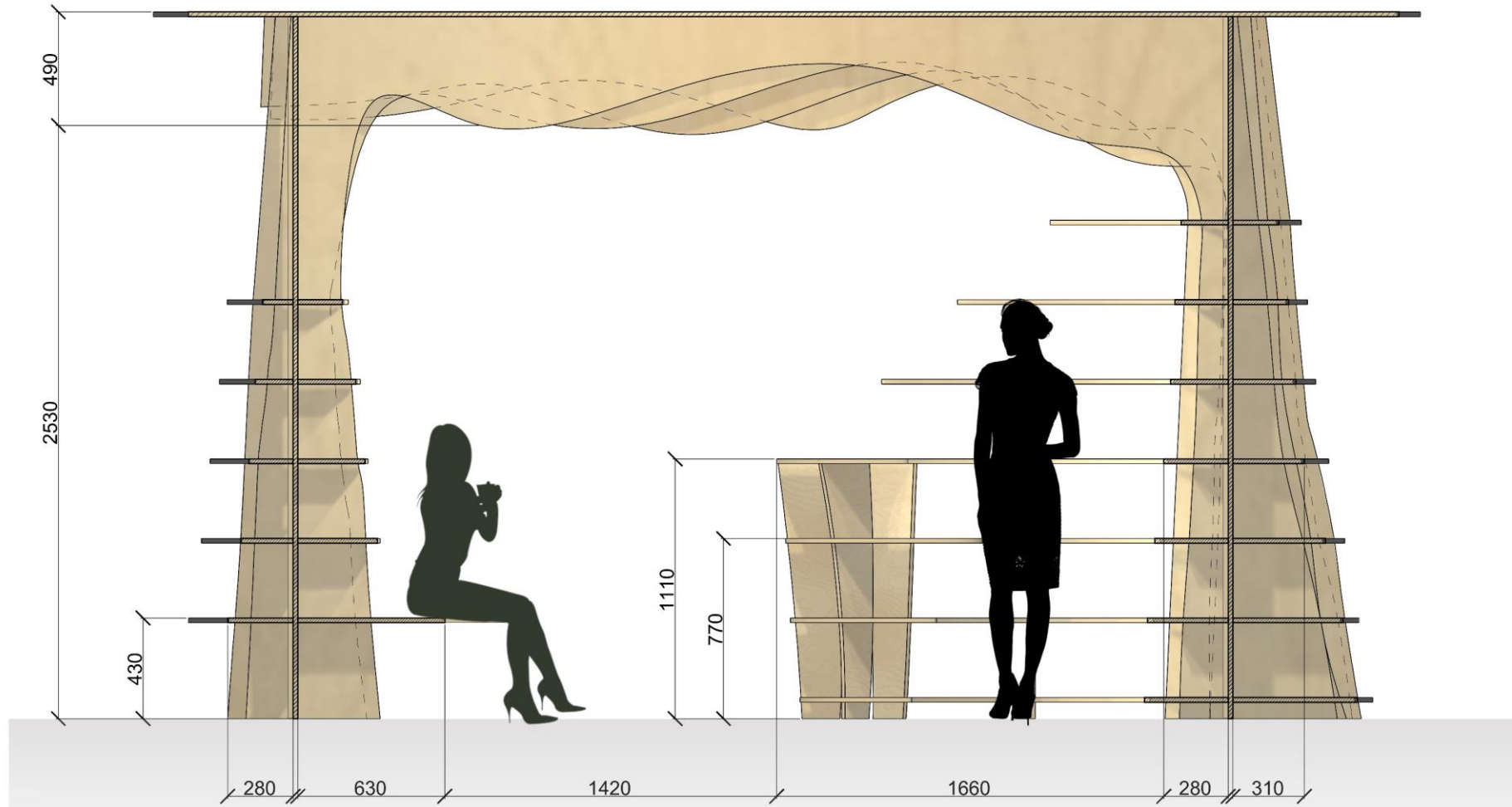
# Rendered Visualization







Rendered Visualization

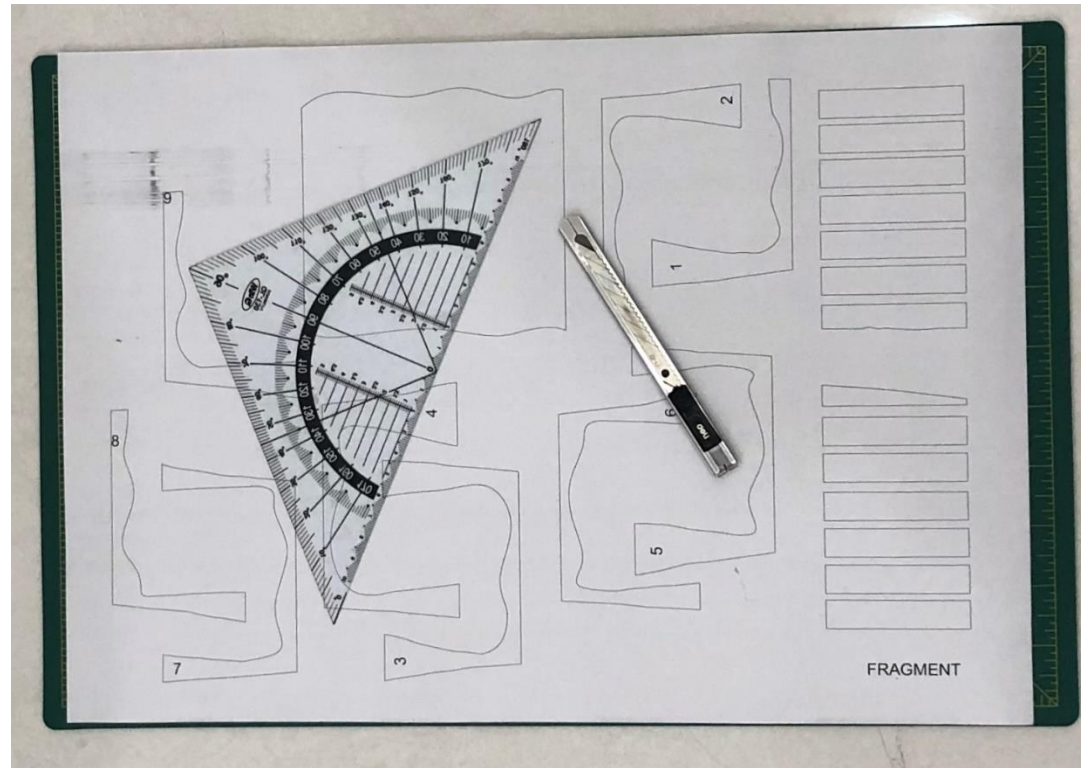


Human Dimensions

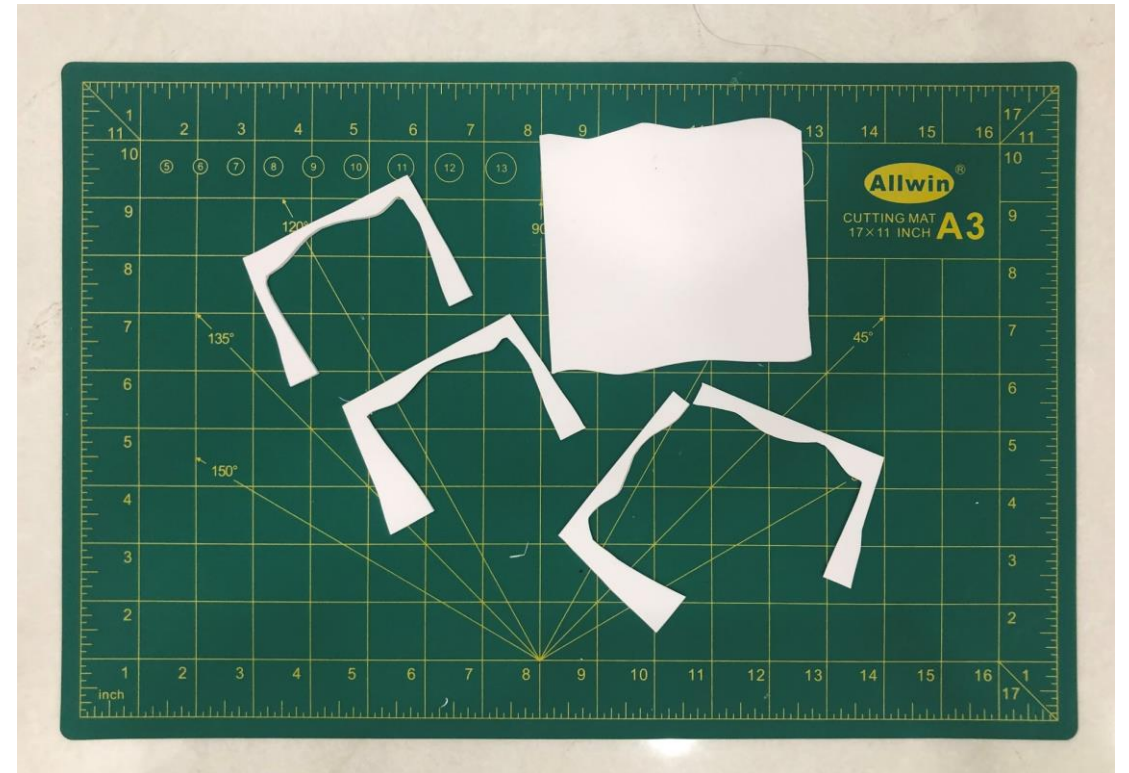
# Physical Model

Scale 1:50

# Physical Model



Printing Fragment Silhouette



Cutting Elements

# Physical Model



Two Point Perspective



One Point Perspective

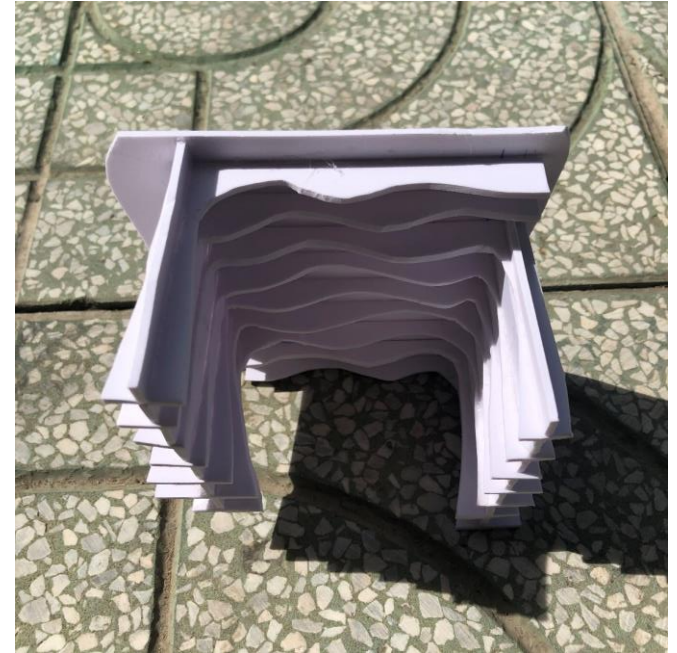
# Physical Model



Front View



Back View



Detailed Ceiling

**Thanks for watching!**